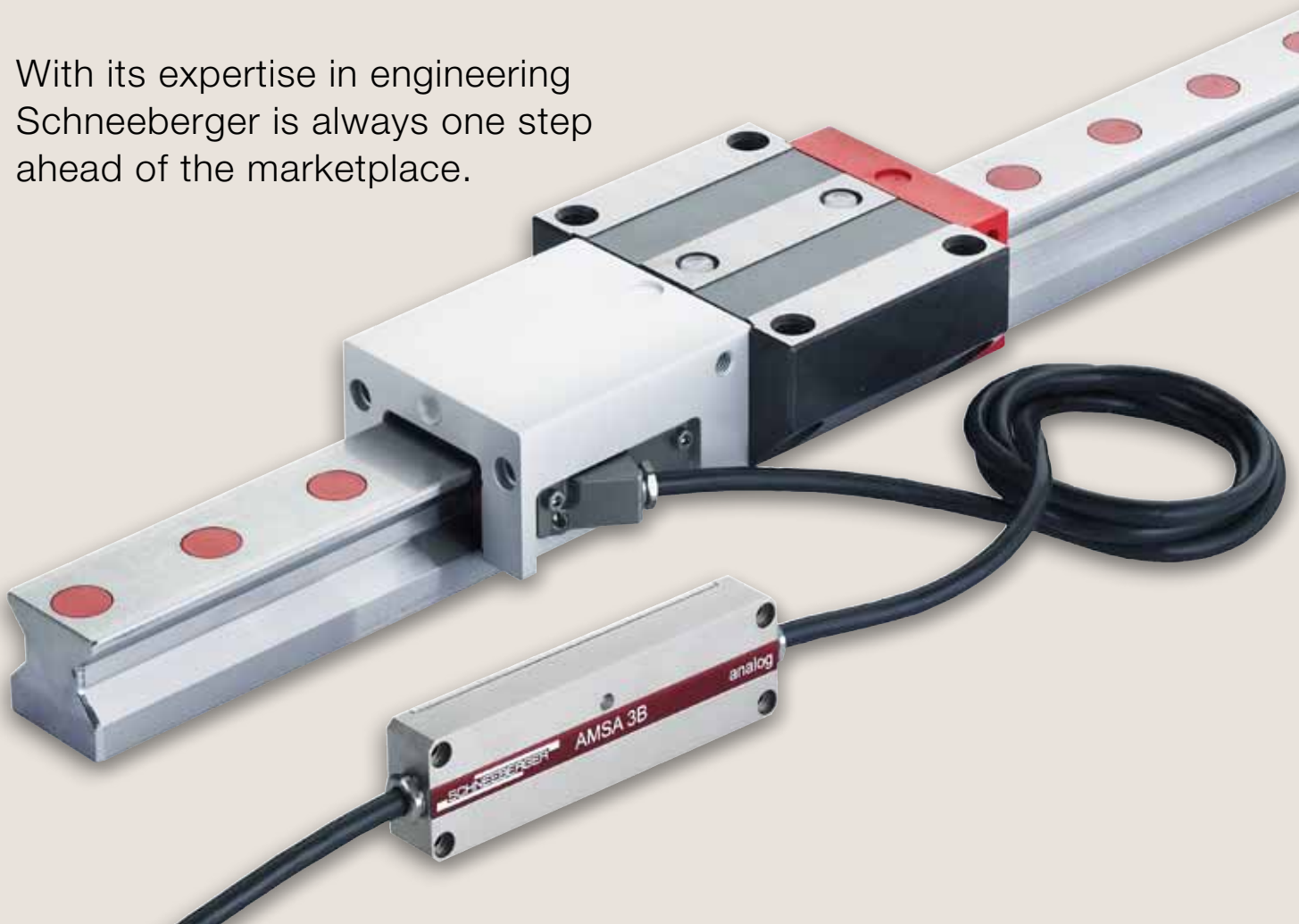




**Schneeberger Linear Technology**  
High precision, innovative and reliable

# The secret of success.

With its expertise in engineering Schneeberger is always one step ahead of the marketplace.

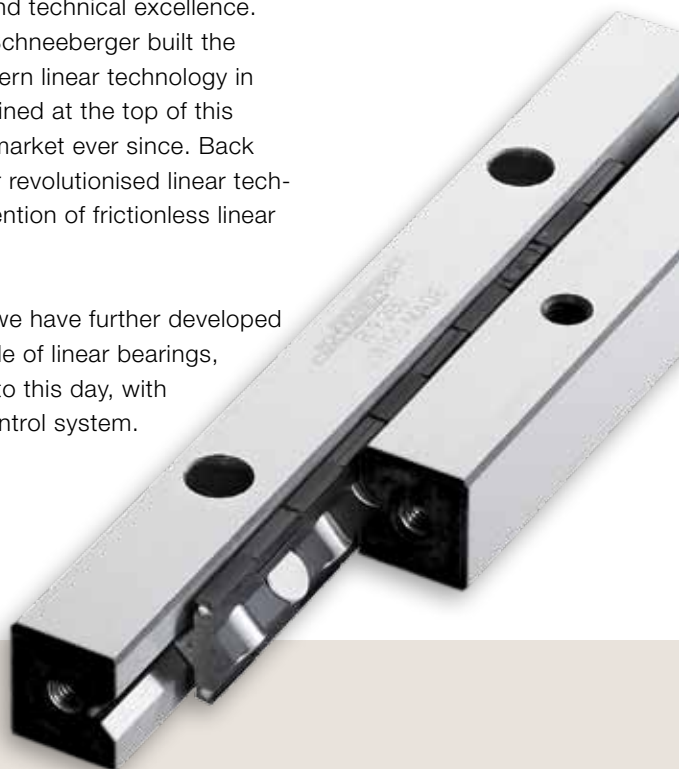


**Until a few years ago, mechanical engineers had to install separate mechanical linear bearings and electronic measuring systems. Now, with its integrated AMS measuring system, Schneeberger has combined the measurement and guide functions in one unified product.**

Electronically supported linear technology not only allows for precise, low-friction movements from one point to another, but also provides instant information about the system's current position. The AMS measuring system reduces thermal variations and functions more precisely and cost effectively, in extreme conditions, than a system with separate components.

Inventions such as this integrated measuring system are clear evidence of our engineering expertise and technical excellence. Founded in 1923, Schneeberger built the foundations of modern linear technology in 1945 and has remained at the top of this highly competitive market ever since. Back then, Schneeberger revolutionised linear technology with the invention of frictionless linear bearing guides.

In recent years, we have further developed this efficient principle of linear bearings, which remains key to this day, with our built-in cage control system.



At both of its key production facilities in Germany and in Switzerland, Schneeberger is targeting investment into a permanent round of quality improvements and cost optimisation. With additional production plants in the Czech Republic and in China, Schneeberger has a local presence in markets that are experiencing particularly dynamic growth.

In the global market for linear motion technology, Schneeberger is unique. We are an independent SME. This structure forms the basis for our dynamic, customer-focused and successful approach to business.

**Four-pronged approach to reducing CO<sub>2</sub> and energy (Blue Competence®)**

**Our linear frictionless guides** lose a minimum amount of energy through friction, allowing our customers to use less energy in their drive systems, which can be kept small as a result.

**Our AMS measurement system** allows highly precise measurements to be taken in workshop environments without the need for high cost compressed air sealing.

**Our mineral casting construction technique** uses a cold casting process, without the need for additional heat. As a result, our energy consumption and carbon footprint is much lower and better than can be achieved by manufacturing processes with traditional steel and iron-based technologies.

**Our racks** enable direct drives which, in comparison to other drive types such as ball screws or hydraulic cylinders, transmit the maximum amount of energy into linear motion with the minimum amount of heat, friction and other energy losses.



Schneeberger Switzerland



Schneeberger Germany



Schneeberger China



Schneeberger Czech Republic





**Abdullah Acarbas**  
Machine Operator  
Gear racks



**Kabatnik Werner**  
Technician Quality  
Assurance

## CORE COMPETENCIES

# Solving problems on our customers' behalf.

Schneeberger is not just about technical excellence, but also provides quality advice and guaranteed lines of supply.

**How does Schneeberger manage to consistently provide its customers with new technical and cost effective solutions? Let our five key process phases demonstrate our abilities to you.**

### Phase 1: Consultation

Every day we see new applications and develop new solutions for linear motion technology in a variety of projects. We offer this treasure trove of experience to our customers. The earlier we can become involved in the design phase of a new product, the better we are able to integrate our systems and help customers achieve the corresponding synergies. Experience our excellent advice for yourself! Our sales engineers will visit your site for a no-obligation initial meeting.

### Phase 2: Concept & Design

During this phase, we create value for our customers by working with them to develop the best possible solutions for their products. Our engineers have early involvement in drawing up intelligent solutions for your requirements, making sure that nothing is overlooked prior to production.

### Phase 3: Production

The technical excellence of Schneeberger comes to the fore during the high-precision production of structural parts and in assembly of components. When precision and consistency of linear motion technology play such a decisive role in determining the competitive advantage of our customers, we leave nothing to chance. We assemble clean room and vacuum applications in our special assembly shops which meet clean room class 1000 requirements.



**Andreas Keller**  
Machine Operator  
Profile guideways



**Heinz Zimmerli**  
Assembly Technician  
in the clean room



**Brigitte Nützi**  
Assembly Operator  
Miniature guideway

#### Phase 4: Logistics

Ensuring continuity of supply is key for our customers, especially those who operate in cyclical markets. We pay particular heed to this, with stability in production, planning and quality.

Our finely honed logistics processes guarantee on-time delivery of our customer's products for assembly.

#### Phase 5: Support

If we do our jobs properly in consultation, concept and design, production and logistics phases, you will hardly need our support services. Nevertheless, we are always there for our customers whenever they need us, with comprehensive, expert assistance. Our customers love our honest and straight-to-the-point way of communicating.

Throughout the five process phases, we provide our customers with the best in expertise and commitment.

«I am responsible for seven small stages in the miniature guideway manufacturing process. These include sorting, assembling, lubricating and packaging the small parts after they have been through ultrasonic cleaning. This is real precision, fingertip work.»

Brigitte Nützi

«I work in the production of gear racks. I particularly enjoy the challenges presented by the complexity of this work. When I do a good job, I know that I am playing a vital role in ensuring that Schneeberger delivers high quality parts to its customers on time.»

Abdullah Acarbas

«I work in manufacturing of profile guideways. My role in the production process is to set up the rails on the grinding machine. The process is very demanding, precise work.»

Andreas Keller



Racks



Linear bearings



Measuring systems

## PRODUCTS

# The entire spectrum.

From standard components to complete systems, Schneeberger offers a unique spectrum of products and services. And we do it all for our customers' benefit.

Alongside standard components, Schneeberger manufactures complete systems, often consisting of a range of Schneeberger components.

When we build the complete system, our customers benefit from our expertise in components. As we manufacture the components ourselves, we can develop them so that they can be optimised for use alongside each other.

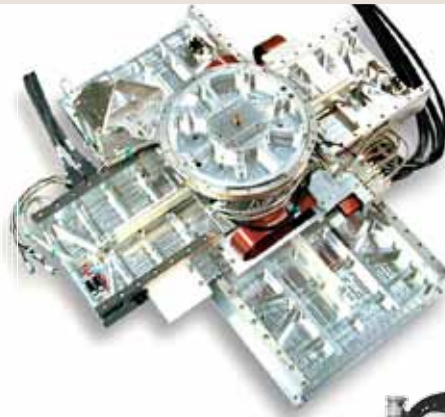
And vice versa: As we also build complete systems, we know what requirements our components have to meet in order to do their jobs in complex systems. Schneeberger's vertical range of manufacturing is unique in the marketplace, just like the advantage that our customers derive as a result.

### 1. Our components

If our customers want to do their own system integration, they can buy the high-precision, reliable components from us to cover their needs for a broad range of linear motion applications. If specific modifications or additional functionality are needed, we can realise these quickly and expertly.



Micro frictionless tables

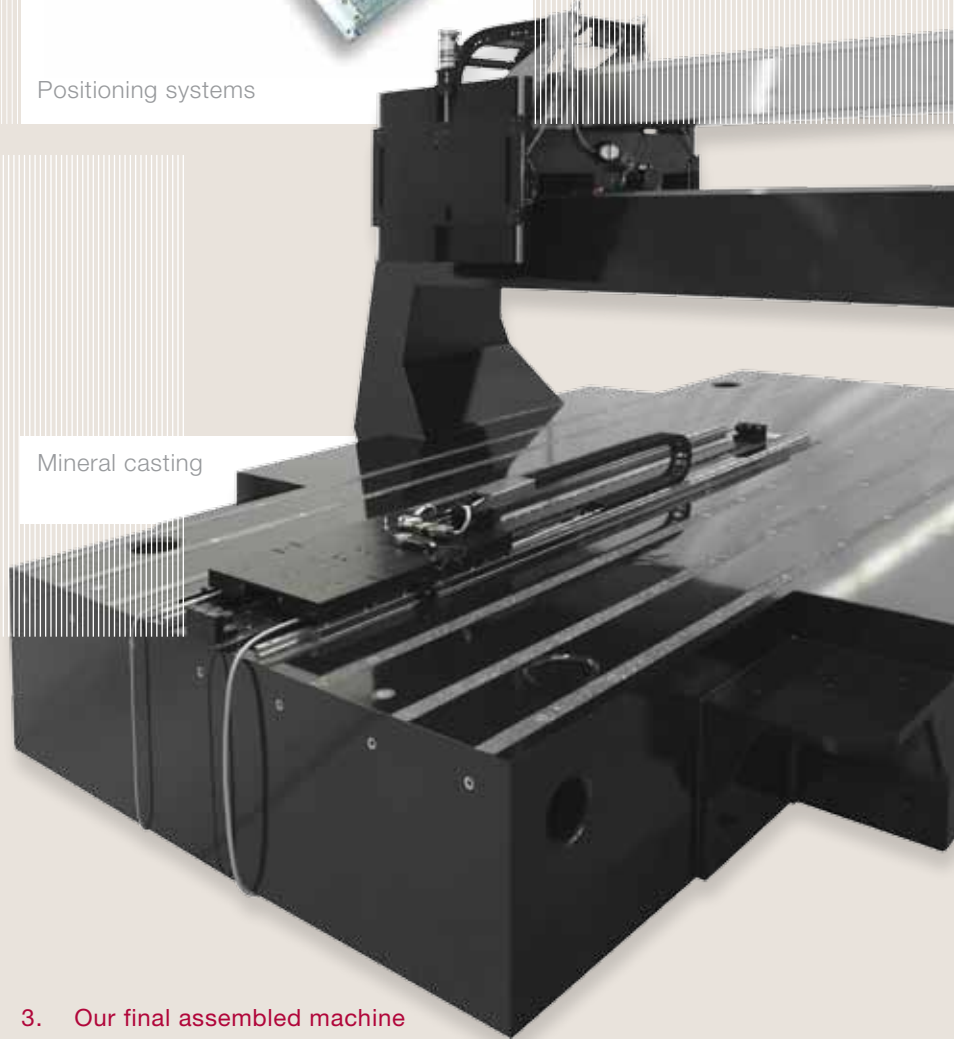


Positioning systems



Profiled guideways

Mineral casting



## 2. Our highly integrated positioning and motion systems

We will be happy to take on your system integration project and can offer a guaranteed source of supply even if your manufacturing volumes change rapidly. Our core business is concerned with offering you more flexibility and reducing risk. Our standardised range of systems and platforms provide cost-efficient solutions for your positioning and motion needs, and can easily be integrated into your application.

## 3. Our final assembled machine structures

At our customers' request, we can mount standard components or highly integrated positioning systems straight on to machine bases. As we also manufacture the mineral casting bases ourselves, we are able to adjust the final assembled machine structure to achieve the best possible fit with customers' kinematic requirements.





## FORMULA-S

# Our guides increase life expectancy.

Not only of machines, but also of people.

Wherever devices and machines need to make highly dynamic and precise linear movements, linear guides with the integrated FORMULA-S cage control system meet the requirement.

FORMULA-S guarantees that the cage, which is supported by frictionless bearings, is guided reliably in the centre of two rails.

Linear bearings play a vital role in the prevention, diagnosis and treatment of tumors. The more precise the movements, the more meaningful the tomography images, x-rays and tissue probes. And that produces more accurate diagnosis.

FORMULA-S is also a key component for the electronics sector. The technology is so mature that Schneeberger now supplies the world's leading manufacturers of wire bonders, sometimes also integrating customer specific products.

### The customer benefits of FORMULA-S

1. The cage is always centered despite any application-specific factors (such as uneven load, high acceleration, installation orientation, temperature variation).
2. No time lost due to corrective adjustments, resulting in very high MTBF and MTBR.
3. Selected preload has no effect on the control system.
4. Long lifetime thanks to selection of materials and rack profile.
5. Supports vacuum applications to  $10^{-7}$  mbar.







## MINIATURE BEARINGS

# Imagine a smartphone without Schneeberger.

High precision linear motion technology allows miniaturisation of electronics.

Our day-to-day lives would be inconceivable if highly integrated electronics components did not exist. They are at the core of our smartphones, sat-navs and credit card readers.

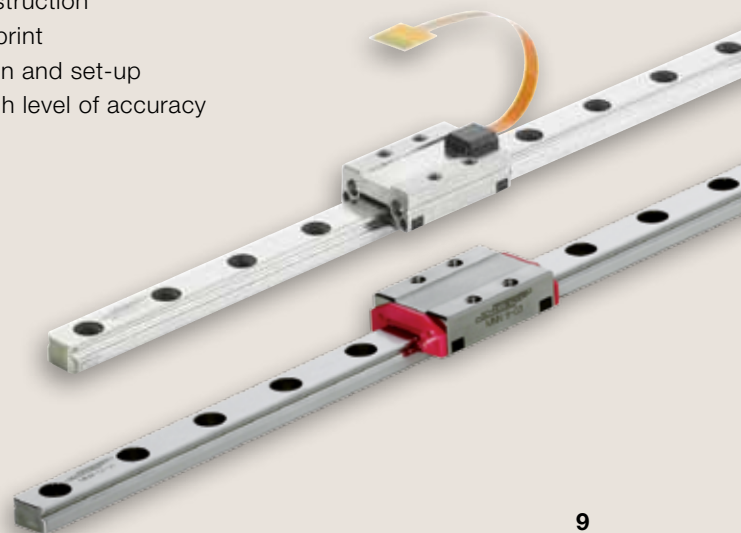
The scale of development in electronic communications technologies is breathtaking, and Schneeberger has made a significant contribution to these advances. Thanks to high-quality linear motion technology, it is possible to place even the smallest components reliably, very rapidly and extremely precisely onto carrier strips and attach and weld the micro-thin wires from the integrated components extremely close together.

Our miniature bearings allow our customers to achieve the greatest density of components on their circuit boards, and make the production process ever more precise and fast and therefore more economic. They generate real added value for the electronics and semiconductor industries and its end customers.

Our MINISCALE miniature products even feature an integrated optical measuring system. This combines the two core functions of guiding and measuring within the smallest footprint.

### Customer benefits from miniature bearings

1. Low cost construction
2. Minimum footprint
3. Fast installation and set-up
4. Consistent high level of accuracy
5. Long lifetime





## MONORAIL MR

# Efficient exploitation of wind power.

Schneeberger MONORAIL profile guideways in use in wind power system manufacturing machines.

When it comes to the production of high precision gears, our customers demand powerful, highly accurate gear cutting machines. The resulting gears are used in gearboxes of various sizes – increasingly in applications for wind power, products that are enjoying massive growth rates.

Manufacturers of gearboxes for use in wind turbines are absolutely reliant on machines to cut and mill gear wheels that guarantee precisely reproducible and extremely accurate gear parts. This gear machinery demands high precision and highly rigid roller guideways so that our customers can meet the exacting specifications for the gears they produce.

Our MONORAIL MR profile guideways offer the best possible solution for this demanding engineering task which has tolerances in the micron range. They provide a high-quality linear motion technology that meets the most precise requirements, including high rigidity, high dynamic and static load bearing capacity, the best possible running tolerances and additional special straightness properties.

The Schneeberger MONORAIL MR profile guideway thus helps wind power systems become more efficient and robust, while reducing noise. There are many other exacting gear applications that require high precision gear manufacturing.





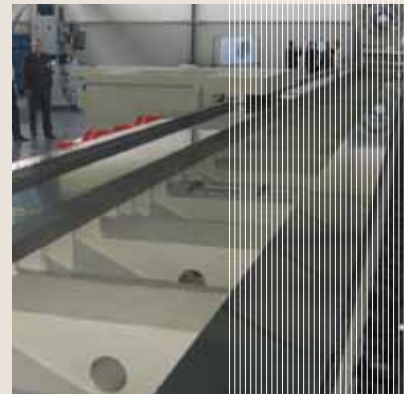
## Exploring new shores.

When research vessels investigate climate change in the Antarctic, Schneeberger has already played its part in the expedition.

Our linear motion technology makes an important contribution in the construction of large ships and their drive systems in particular. Gigantic crankshafts and driveshafts are turned, milled, ground and repaired on large, multipurpose extended-bed lathes – with exacting tolerances despite a 40 metre stroke. When our customers approach us about applications such as this, we respond with custom bearings and gear racks. We also supply components for use in electricity generation, for example in the manufacturing of rotor heads or gears for wind turbines. This means we can make our own contribution to exploiting new sources of energy.

Our custom bearings and gear racks can be used in any application where standard bearings do not meet the machine builder's requirements due to size or accuracy. The results are customer-specific, innovative solutions.

We can create guideways with running characteristics, with exceedingly high rigidity or with extremely high load carrying capacities. When you come to Schneeberger, you do not have to accept any compromises. Our universal machine pool and highly competent engineers allow us to respond to complex customer demands for products both quickly and efficiently. Initially in small batches for prototype requirements, and then in larger series volumes, guaranteeing consistently high quality and a reliable, secure source of supply.





# Schneeberger opts for mineral casting.

The technical, economic and ecological benefits are clear to see.

When it comes to situations involving extremely dynamic yet very precise movements, mineral casting is the ideal technology for base construction, with clear technological, economic and ecological advantages over steel or cast iron.

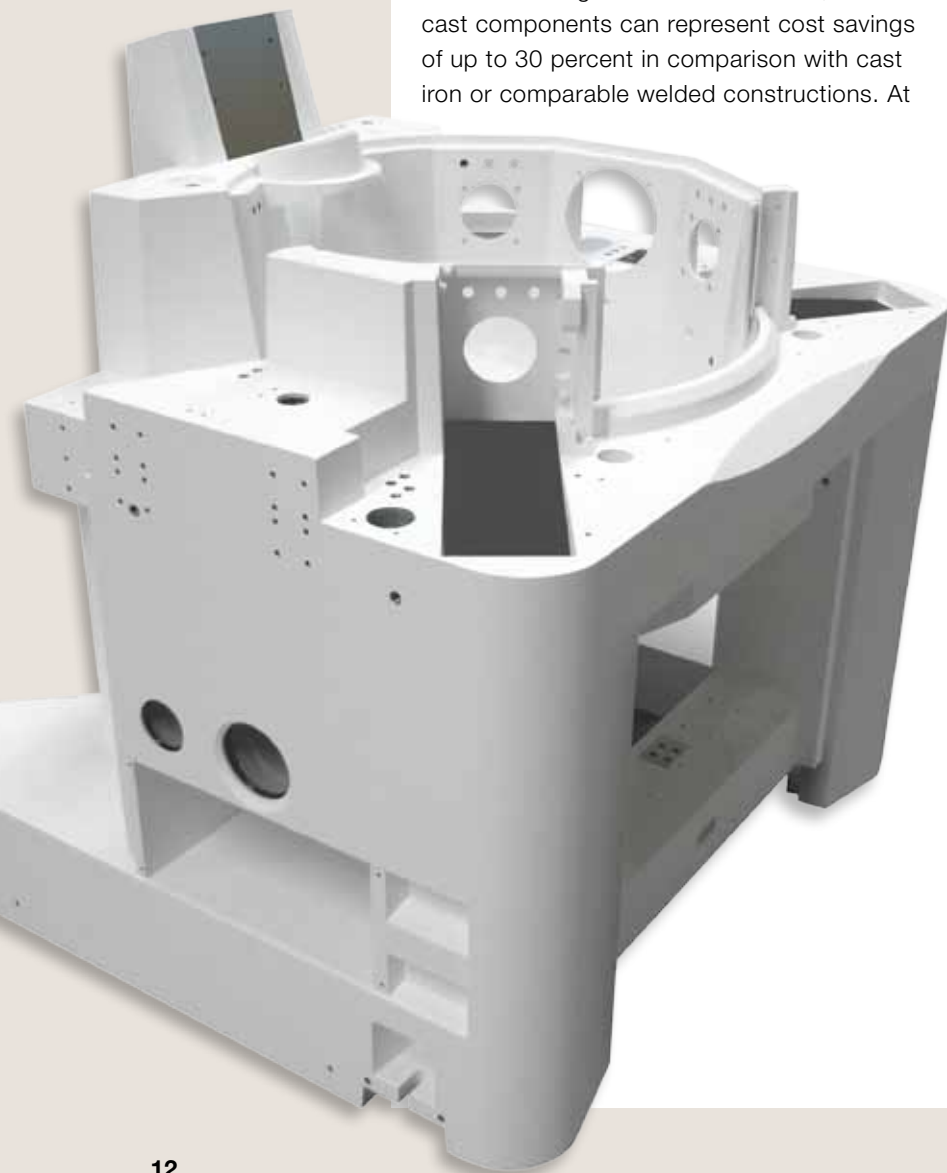
Its excellent vibration damping properties, chemical resistance and thermal advantages have convinced our customers – not just in machine tool construction, but also in medical technology, in the solar power and electronics industries and in the packaging sector, as well as many other fields of application.

When the right materials are used, mineral cast components can represent cost savings of up to 30 percent in comparison with cast iron or comparable welded constructions. At

the same time, manufacturing time and delivery lead times are significantly shorter.

As a result, Schneeberger opts for mineral casting. In 2007 we opened our newest mineral casting facility in Cheb, in the Czech Republic. It has quickly become the most modern facility of its kind in the whole of Europe.

The entire process of product development and manufacturing is subject to the most exacting quality requirements, from construction to the casting process and the high precision finishing work. This means that we can guarantee our customers that we can supply even the most complex machine structures and assemblies with guideways and other elements installed and aligned, on time, to specification and with an inspection certificate if required.





## SAMPLE APPLICATION

# A single cast.

Mineral casting from Schneeberger offers unbeatable advantages, which come to the fore in the optical industry.

Anyone who works with optical components and surfaces, such as industrial lenses or glass for spectacles, cannot afford to cut corners when it comes to surface quality, precision and productivity. After all, their customers' sight depends on it, as does the ability of machine manufacturers to compete in the optical industry.

Powerful machines can manufacture well over 100 spectacle lenses per hour, with consistently reproducible levels of quality. In order to realise the high engineering dynamics and required product geometry while maintaining the utmost precision, machine constructors require a machine bed that has exemplary vibration dampening and thermal stability, such as can only be achieved by mineral casting.

This means we are an indispensable partner for manufacturers of production equipment, not only for high quality industrial optics but also for fine spectacle lenses.

Schneeberger produces its mineral casting in a cold casting process using minerals and

epoxy resin. Thanks to the especially perfected production methods, we can achieve exceptionally flat and parallel reference surfaces, whether for guideways or other precision components such as measuring scales or linear motors.

As Schneeberger manufactures both mineral cast constructions and linear bearings, we are able to adjust the bearing support surfaces so that they are an optimum match for each bearing type and for the specific application. This ensures the most linear, parallel and flat operation possible for linear movements, resulting in optimum technical and economic solutions.

# Tailored for every customer.

Thanks to its high level of engineering expertise, Schneeberger is also able to control complex motion systems with great precision.

In Schneeberger you have a partner who will supply you with well thought-out solutions for your entire motion and positioning requirements for many different applications.

**We rely on expertise in three core fields:**

**Engineering:** We project manage and develop highly complex positioning systems, including those for particularly demanding applications such as high-vacuum environments.

**Applications:** We have successfully tested a range of system approaches in many different industries under many different conditions. On this basis we work together with our customers to evaluate the optimum products and project-specific solutions.

**Manufacturing and integration:** We manufacture mechanical sub assemblies and assemble highly complex and precise systems, while guaranteeing a very secure source of supply.

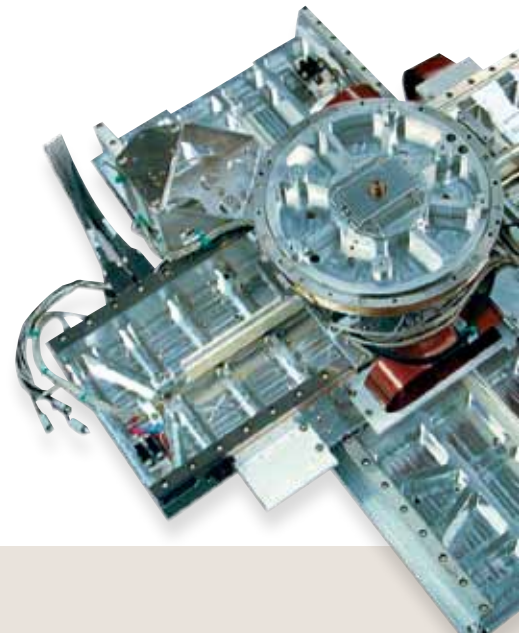
Using our standard component range, we are able to produce tailored solutions within a

very short time frame. From single axes with integrated control units to highly complex systems based on mineral cast constructions. When it comes to integration, we always go just as far as the customer wants us to.

**Our positioning systems are used in all sorts of situations.**

Our engineers have a broad technical knowledge of many different branches of industry and can therefore quickly adapt to problems posed by our customers, including in new fields of business. Our great capacity for innovation allows us to develop complex positioning systems in the following markets:

- Semiconductor
- Flat Panel
- Solar
- Electronics
- Optical
- Printing
- Laser processing
- Dental and medical technology





# Achieving the optimum angle of attack.

Schneeberger's positioning systems allow customers in the solar industry to improve the efficiency of their solar cells.

**The solar cell manufacturer that achieves the greatest degree of efficiency will set the pace in this dynamic market.**

In a highly competitive market, our positioning systems make the difference, allowing our customers to apply the required structures to solar cells with extreme precision. Schneeberger builds motion systems for laser scribing machines and with its highly precise and dynamic linear motion systems is able to produce structure images that are so parallel and

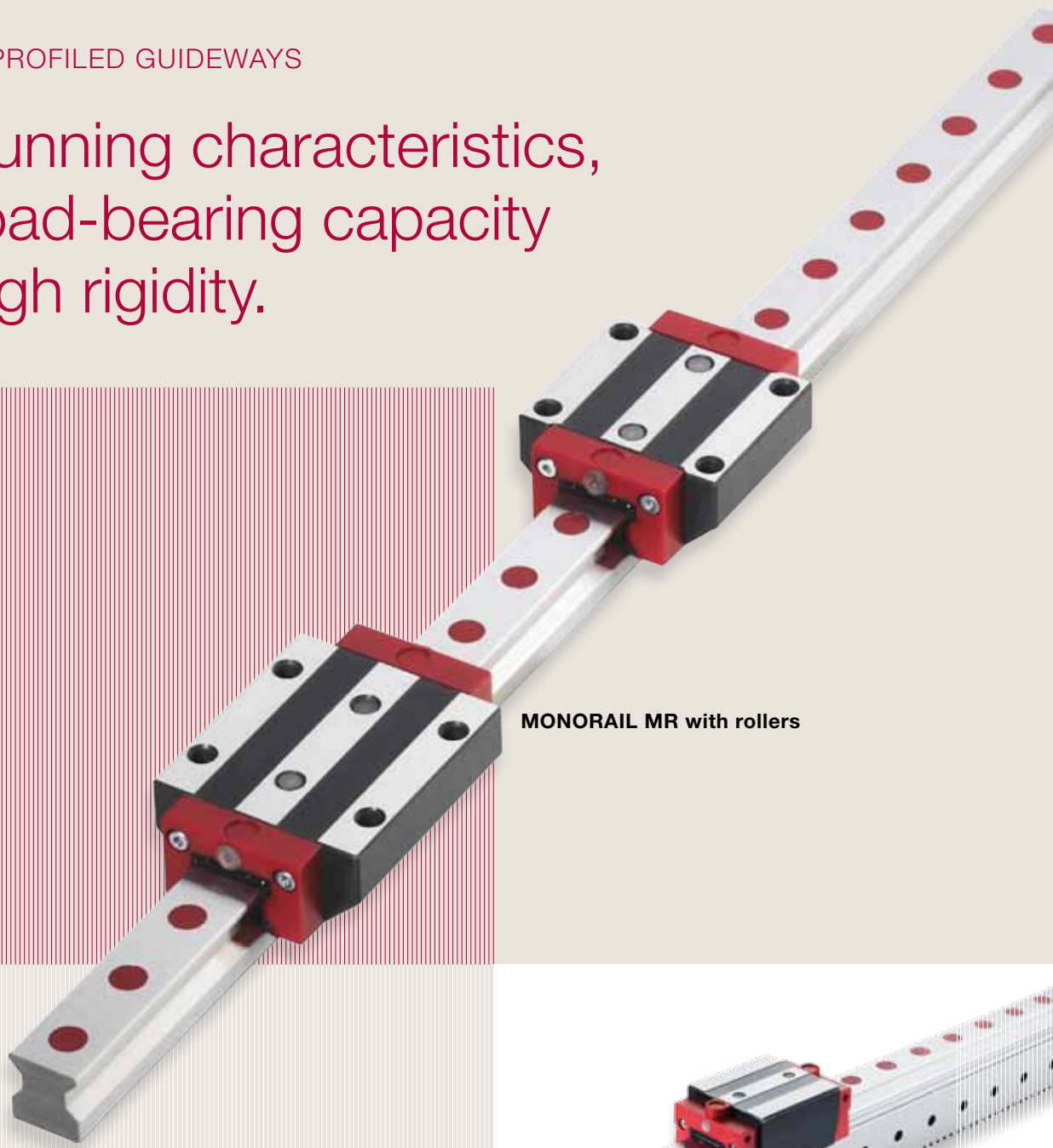
consistent that inactive circuits are minimised and the active, energy producing surfaces can be maximised.

Our customers are able to realise such accurate products thanks to our excellent linear motion technology, even given the high levels of acceleration and speed required. This helps them improve their productivity and reduce costs.

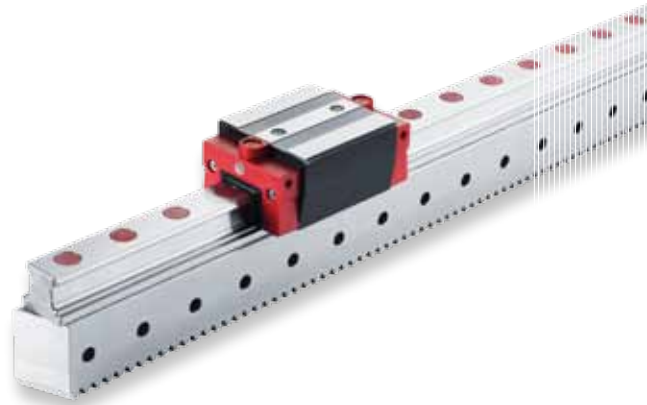
So Schneeberger is helping renewable energy sources make the breakthrough.



Best running characteristics,  
high load-bearing capacity  
and high rigidity.



**MONORAIL MR with rollers**



**MONORAIL BZ with balls**

**MONORAIL BM with ball bearings**

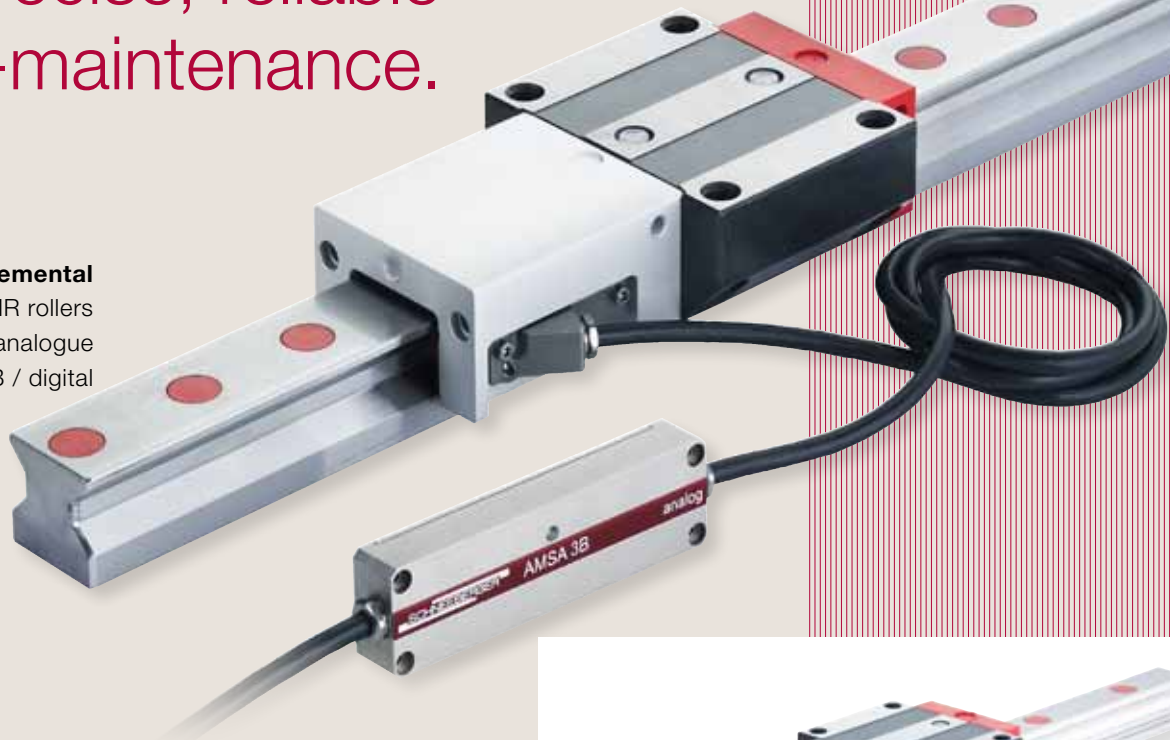
All MONORAIL profiled guideways are available in different sizes with a variety of carriage types

## MONORAIL AMS INTEGRATED MEASURING SYSTEM

# Highly precise, reliable and low-maintenance.

### MONORAIL AMS incremental

MONORAIL MR rollers  
AMSA-3B / analogue  
AMSD-3B / digital



### MONORAIL AMS incremental

MONORAIL BM balls  
AMSA-4B / analogue  
AMSD-4B / digital



### MONORAIL AMS absolute

MONORAIL MR rollers  
AMSABS-3B

### MONORAIL AMS length

MONORAIL MR rollers  
AMSA-3L / analogue

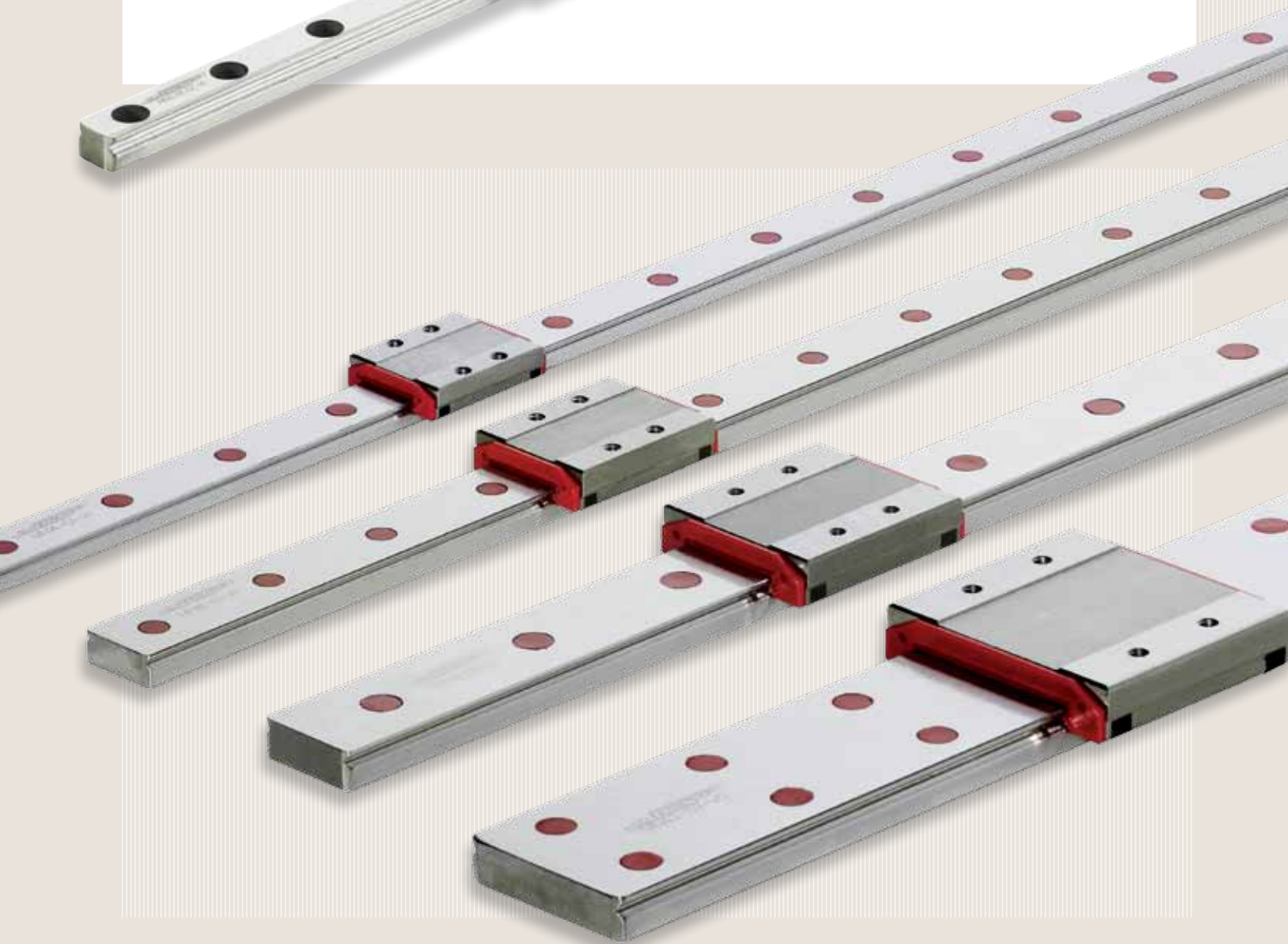


All MONORAIL AMS integrated measurement system are available in different sizes with a variety of carriage types



# Guiding and measuring in a very small footprint.

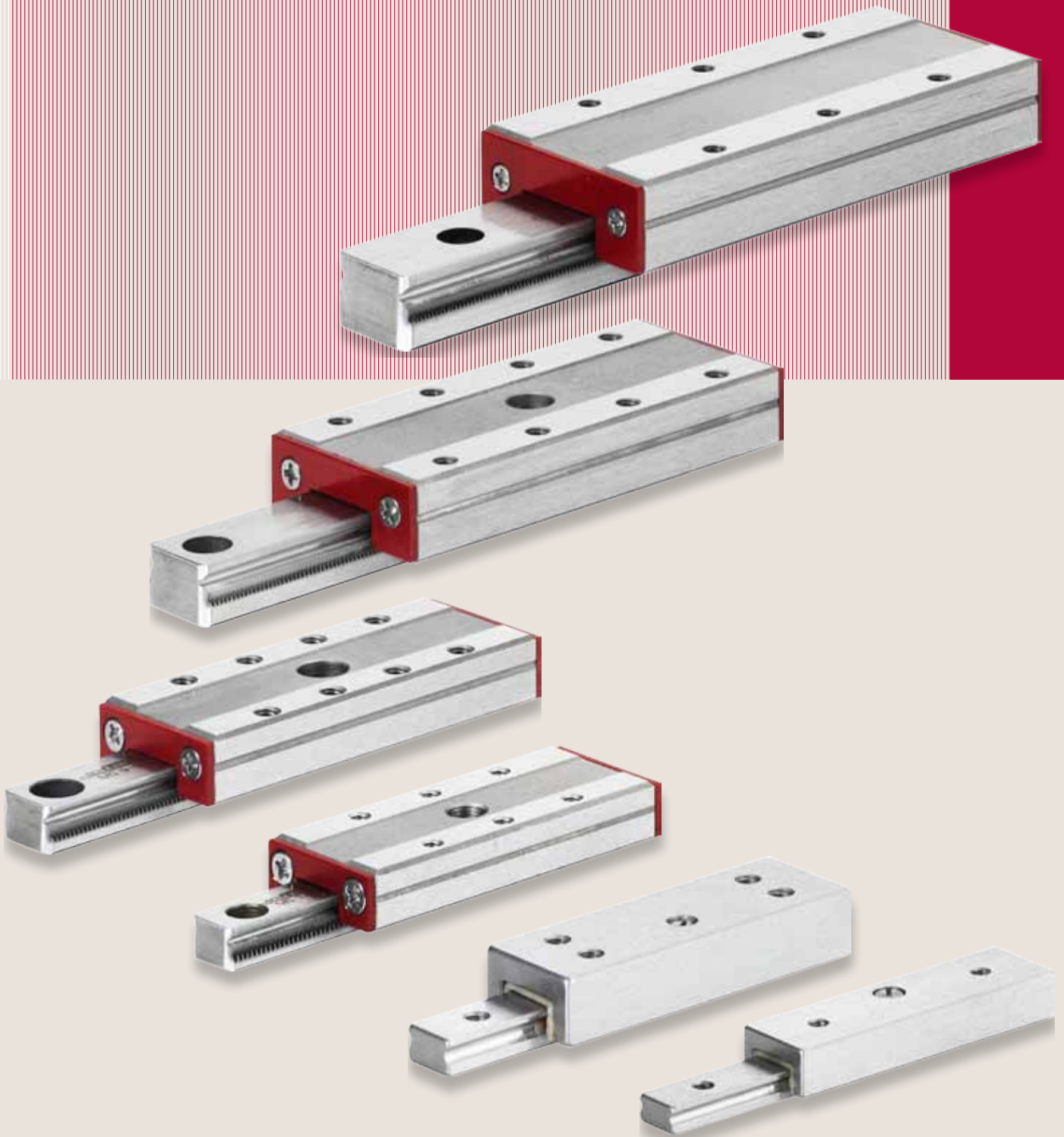
**MINISCALE:** the only MINIRAIL variant with an integrated measuring system



**MINIRAIL profiled miniature guideway with ball bearings**

The miniature guideways are available in eight different sizes and with different carriage lengths

Ultimate process security due to integrated cage control system.

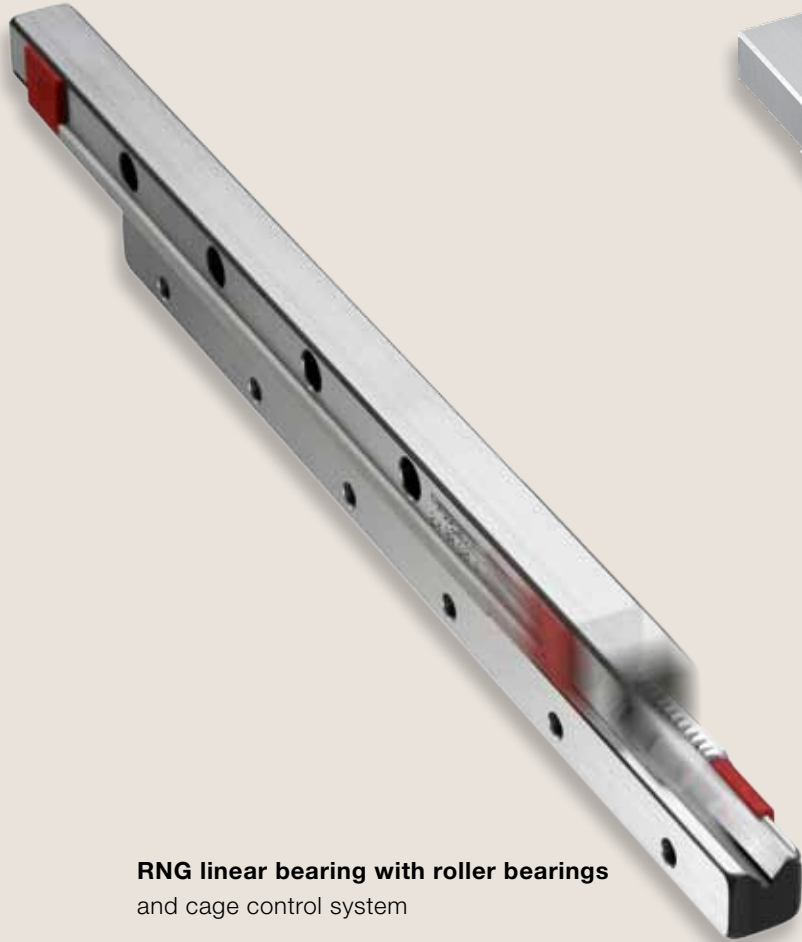


**MINISLIDE micro frictionless tables with ball bearings**

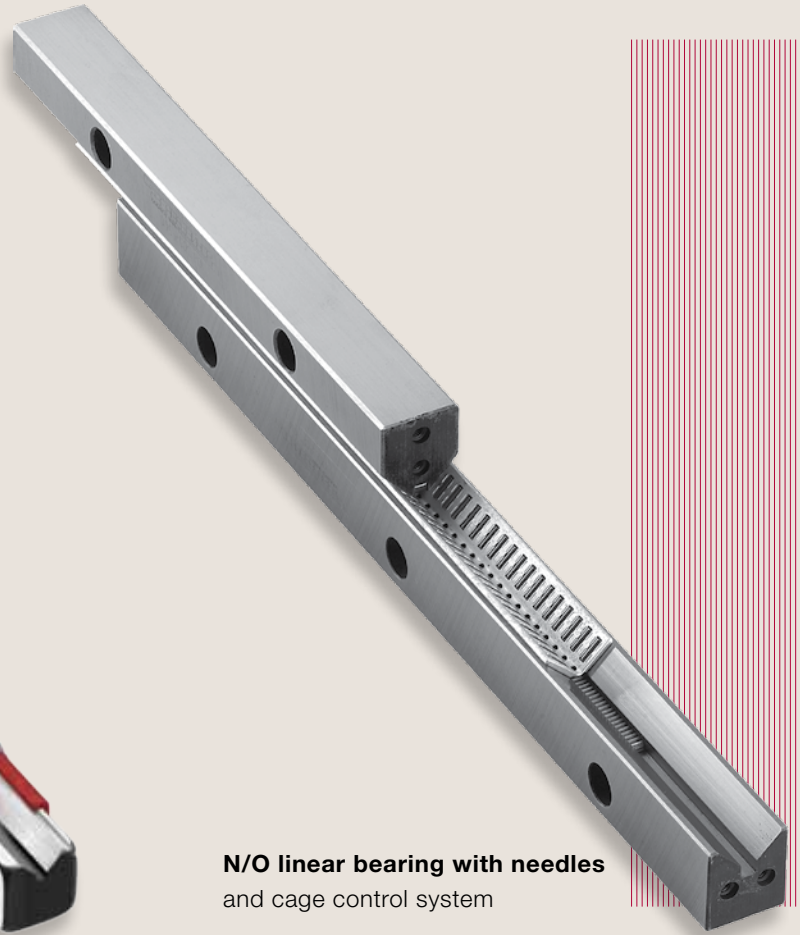
MINISLIDE variants are available in six different sizes and with different lengths

R, RNG, N/O LINEAR BEARINGS

High precision with extremely low friction movement.



**RNG linear bearing with roller bearings and cage control system**



**N/O linear bearing with needles and cage control system**



**R linear bearing with balls**

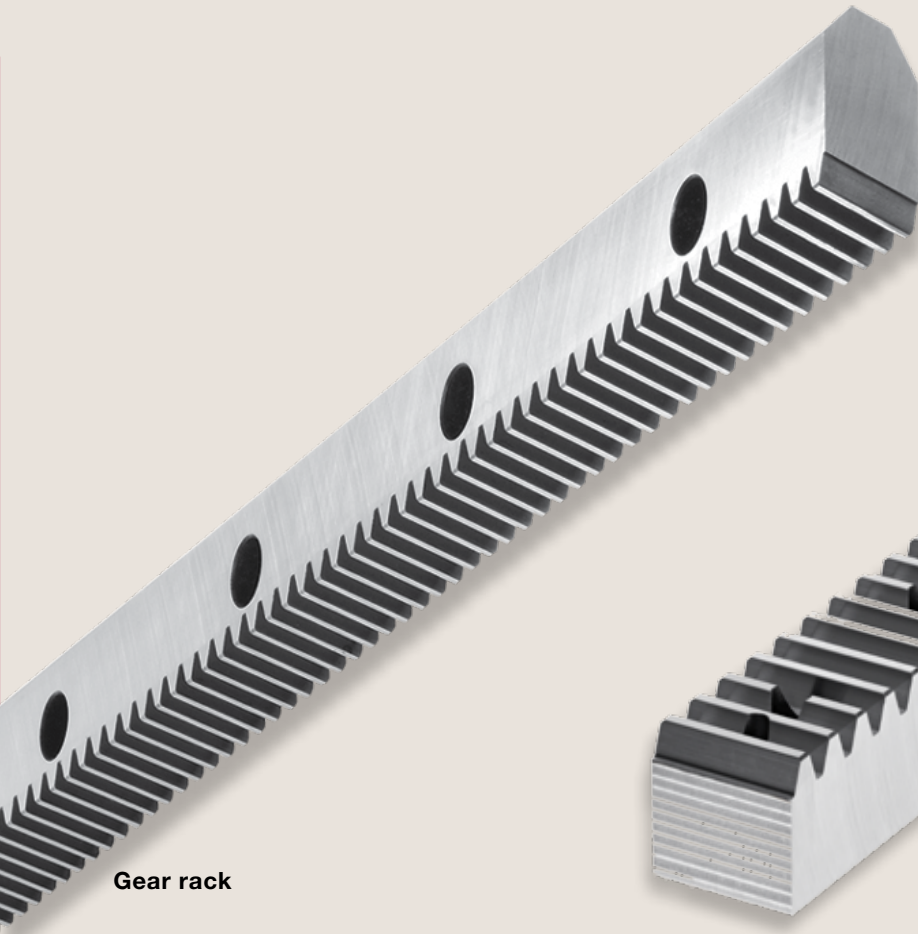


**R linear bearing with rollers**

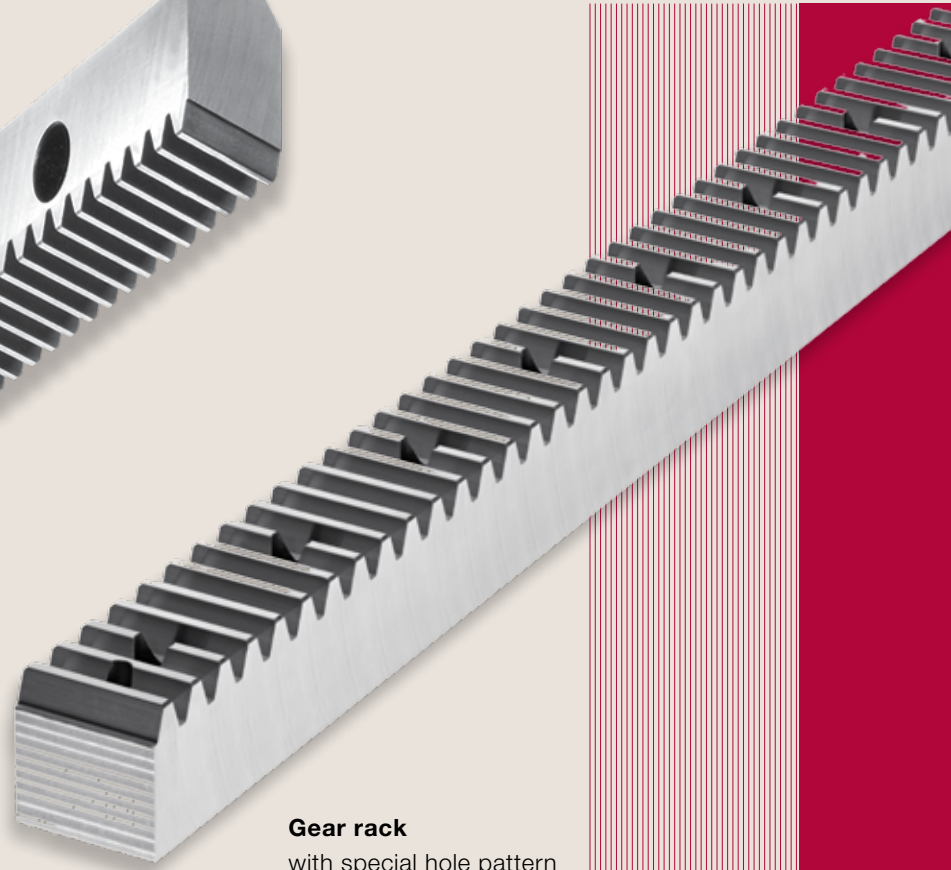
All linear bearings are available in variety sizes



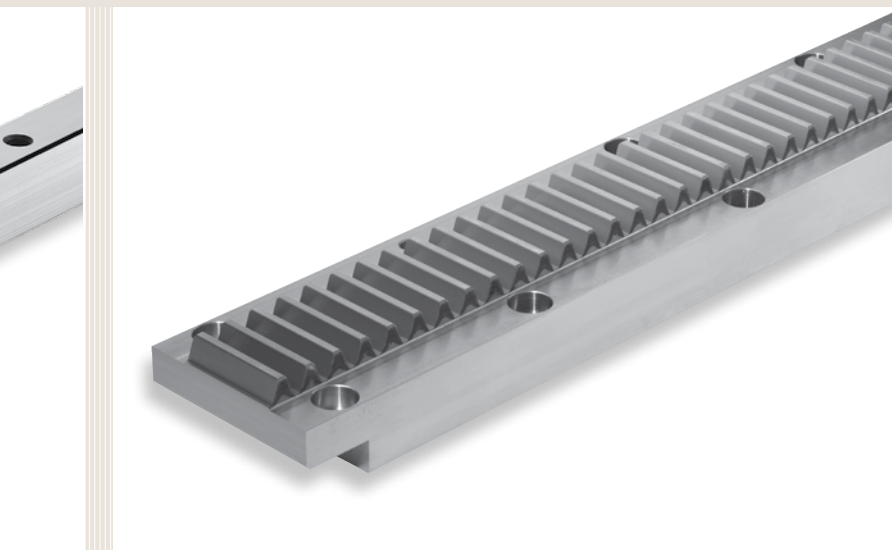
# Standard and custom designs.



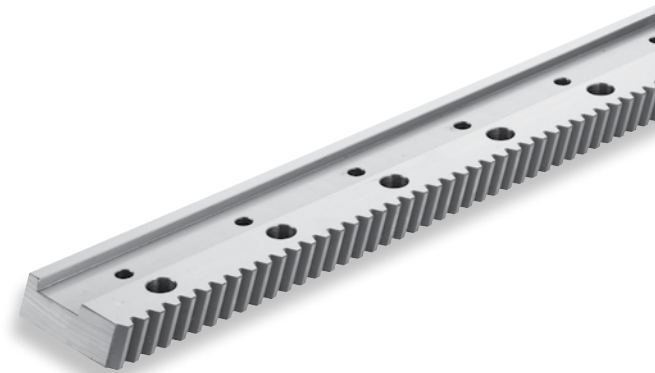
**Gear rack**



**Gear rack  
with special hole pattern**



**Flanged, straight toothed gear rack**



**Helical gear rack  
for integration with MONORAIL profiled guideways**

In addition to standard models, our gear racks are also available in a variety of special designs

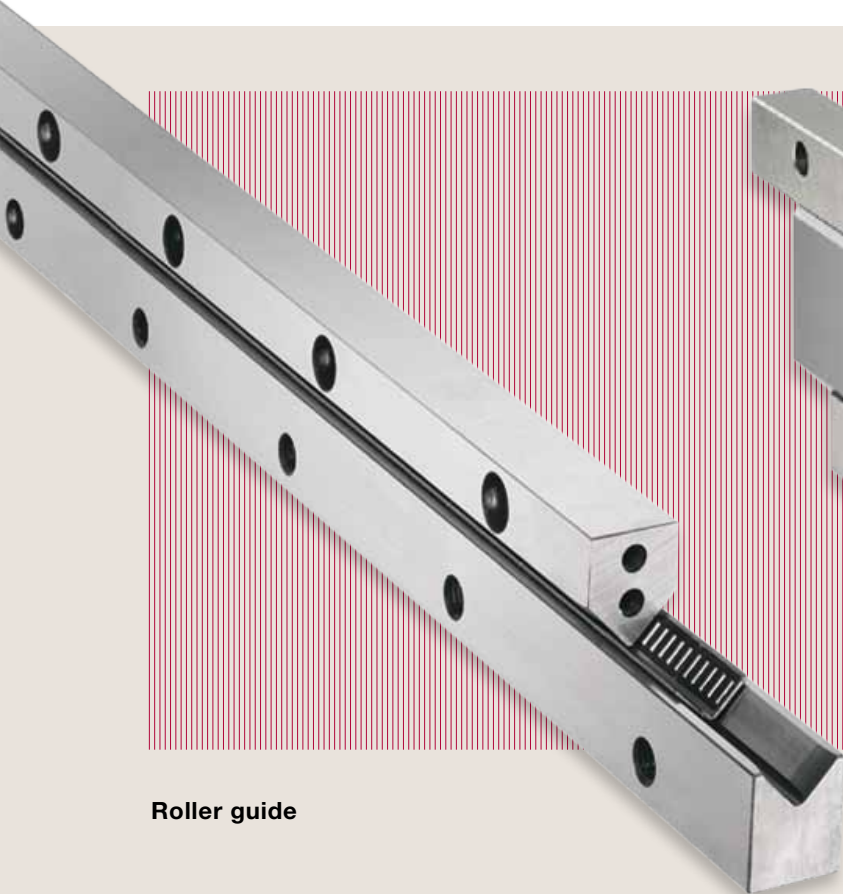
# Competence in linear bearings.



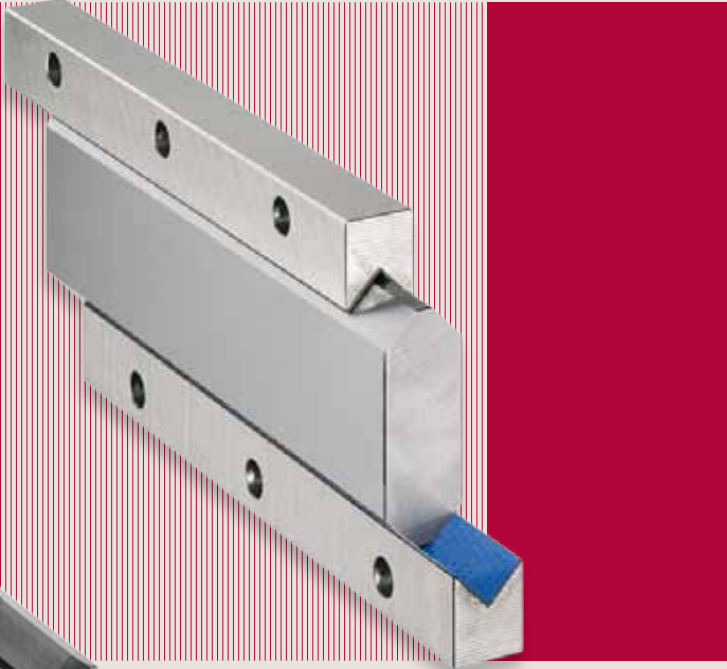
**Double V-shaped guide**



**Prismatic guide**



**Roller guide**



**Sliding guideway**

Any cross-section up to 6 meter in length with measuring machine accuracy levels

## SCHNEEBERGER AGENCIES

### EUROPE

#### AUSTRIA

Locations of  
HaberKorn GmbH  
Antriebstechnik in:

1030 Wien  
Phone +43 1 74074 - 0  
Fax +43 1 74074 - 99  
E-Mail: info.wien@haberkorn.com

6961 Wolfurt  
Phone +43 5574 695 - 0  
Fax +43 5574 695 - 99  
E-Mail: info.wolfurt@haberkorn.com

6063 Innsbruck  
Phone +43 512 244 00 - 0  
Fax +43 512 244 00 - 99  
E-Mail: info.innsbruck@haberkorn.com

4060 Leonding  
Phone +43 7229 687 - 0  
Fax +43 7229 687 - 99  
E-Mail: info.leonding@haberkorn.com

9500 Villach  
Phone +43 4242 42038 - 0  
Fax +43 4242 42038 - 99  
E-Mail: info.villach@haberkorn.com

8055 Graz  
Phone +43 316 287 082 - 0  
Fax +43 316 287 082 - 99  
E-Mail: info.graz@haberkorn.com

#### BOSNIA-HERZEGOVINA/SLOVENIA/ SERBIA/MONTENEGRO

HaberKorn d.o.o.  
Vodovodna ul. 7  
2000 Maribor  
Phone +386 2 320 67 10  
Fax +386 2 320 67 30  
E-Mail: info@haberkorn.si

#### BULGARIA

Atlas Technik EOOD  
Hippodroma, Bl. 139B, Eing. A, App. 6  
1612 Sofia, PK 51  
Bulgarien  
Phone +359 2 859 76 81  
Fax +359 2 859 76 81  
Mobile +359 8 852 32 595  
E-Mail: al\_popoff@techno-link.com

#### CROATIA

HaberKorn CRO d.o.o.  
10431 Sveta Nedelja  
Phone +385 1 333 5870  
Fax +385 1 337 3902  
E-Mail: info@haberkorn.hr

#### DENMARK

HERSTAD + PIPER A/S  
Jernholmen 48c  
2650 Hvidovre  
Phone +45 367 740 00  
Fax +45 367 777 40  
E-Mail: mail@herstad-piper.dk

#### FINLAND

EIE Maskin OY  
PL, 80 Asematie 1  
10601 Tammisaari  
Phone +358 192 239 100  
Fax +358 192 239 199  
E-Mail: info@eie.fi

#### FRANCE

Axmo Précision  
ZL de la Moinerie  
Rue du Roussillon  
91222 Brétigny sur Orge  
Phone +33 160 849 075  
Fax +33 160 853 155  
E-Mail: info@axmo.fr

### EUROPE

#### GERMANY/BOSNIA-HERZEGOVINA/ CROATIA/SERBIA/SLOVENIA

BGP-Blazevic Geradlinige Präzisionstechnik  
Stipo Blazevic  
Hochstiftstrasse 31  
93055 Regensburg  
Phone +49 941 569 996 20  
Fax +49 941 569 950 97  
Mobile +49 151 401 126 25  
E-Mail: info@bgp-blazevic.de

#### GREAT BRITAIN

LG Motion Ltd.  
Unit 1 Telford Road  
Houndmills Estate, Basingstoke  
Hampshire RG21 6YU  
Phone +44 012 563 656 00  
Fax +44 012 563 656 45  
E-Mail: info@lg-motion.co.uk

#### ITALY

Nadella S.r.l.  
Via Melette, 16  
20128 Milano  
Phone +39 022 709 329 7  
Fax +39 022 551 768  
E-Mail: customer.service@nadella.it

#### NORWAY

Elmeko AS (s. EIE Maskin)  
Tvetenveien 164  
0671 Oslo  
Phone +47 675 722 70  
Fax +47 675 722 80  
E-Mail: elmeko@elmeko.no

#### POLAND

TECHNIKA LINIOWA  
Rollico Rolling Components  
Ul. Cegielniana 21  
42-700 Lubliniec  
Phone +48 343 510 430  
Fax +48 343 510 431  
E-Mail: rollico@rollico.com

#### RUMANIA

Meximpex SRL  
4, Burebista Blvd.,  
bl. D13 sc. A et 2 ap. 9-10  
031108 Bucharest  
Phone +40 213 166 843 /44  
Fax +40 213 166 846  
E-Mail: office@meximpex.ro

#### SLOVAKIA

KBM, s.r.o.  
Juraj Hajovsky  
Zitná 13  
010 04 Zilina  
Phone +421 417 070 324  
Fax +421 417 070 333  
Mobile +421 090 585 146 5  
E-Mail: jhajovsky@kbm.sk

#### SWEDEN

EIE Maskin AB  
Box 13031  
40251 Goeteborg  
Phone +46 317 074 800  
Fax +46 311 952 55  
E-Mail: eie@eie.se

#### TURKEY

Birlik Rulman (Paz.ltd.sti.)  
Mumhane Cad. No: 16  
80030 Karakoy-Istanbul  
Phone +90 212 249 54 95  
Fax +90 212 244 21 40  
E-Mail: birlik@birlikrulman.com

### AUSTRALIA/NEW ZEALAND

RJM Engineering Supplies  
Tamar Street 13  
VIC 3134 Ringwood  
Phone +61 398 794 881  
Fax +61 398 793 700  
E-Mail: rjmeng@rjmeng.com.au

### ASIA

#### TAIWAN / Republic of China

Ever Bright Precison Ltd.  
1 F,nr.52  
Lane 10 Chi-hu Road  
114 Taipei  
Phone +886 226 595 586  
Fax +886 226 595 587  
E-Mail: sales@everbright.com.tw

#### KOREA

Intech Automation Inc.  
1-1108, Ace Hitech City  
55-20 Mullaee-Dong 3-Ga  
Youngdeungpo-Ku  
150-972 Seoul

Phone +82 2 3439 0070 - 4  
Fax +82 2 3439 0080  
E-Mail: intech@intechautomation.co.kr

Liato Korea Inc.  
12-15, Moonhyung-Ri,  
Opo-Eup  
Kwangjoo-City  
464-894 Kyonggi-Do  
Phone +82 317 661 434 /6  
Fax +82 317 661 438  
E-Mail: info@liato.co.kr

LuBo Industries, Inc.  
#7-9, Songdo-dong,  
Yeonsu-gu  
Incheon, Korea  
(Namdong Ind, Zone 71B-13L)  
Phone +82 327 220 243  
Fax +82 327 220 198  
E-Mail: vf3510@jedainc.com

### SOUTH AFRICA

Fischli & Fuhrmann Ltd.  
P.O Box 253  
1600 Isando Transvaal  
Phone +27 119 745 571  
Fax +27 119 745 574  
E-Mail: info@fifu.co.za

### SOUTH AMERICA

Ibatech Tecnologia Ltda.  
Av. Amazonas, 976  
90240 542 Porto Alegre RS  
Brazil  
Phone +55 513 337 14 81  
Fax +55 513 337 52 65  
E-Mail: ibacorp@iba-corp.com



## PROSPECTUSES

- AUTOMATION
- COMPANY BROCHURE
- CUSTOMIZED BEARINGS
- GEAR RACKS
- LINEAR BEARINGS AND RECIRCULATING UNITS
- MINERAL CASTING SCHNEEBERGER
- MINIRAIL the miniature guideway
- MINISCALE miniature guideway with integrated measuring system
- MINISLIDE micro frictionless tables
- MONORAIL AND AMS profiled linear guideways with integrated measuring system
- MONORAIL AND AMS application catalog
- POSITIONING SYSTEMS
- SLIDES



## SCHNEEBERGER COMPANIES

### SWITZERLAND

SCHNEEBERGER AG  
St. Urbanstrasse 12  
4914 Roggwil/BE

Phone +41 62 918 41 11  
Fax +41 62 918 41 00

E-Mail:  
info-ch@schneeberger.com

### JAPAN

Nippon SCHNEEBERGER K.K.  
Shimouma Miyagawa Bld 4F  
1-49-12 Shimouma  
154-0002 Tokyo

Phone +81 3 5779 7339  
Fax +81 3 3487 6010

E-Mail:  
info-j@schneeberger.com

### JAPAN

日本シュネーベルガー株式会社  
〒154-0002  
東京都世田谷区下馬1-49-12  
下馬MIYAGAWAビル  
1階(ショースペース)階(営業部)

電話 03 5779 7339  
ファクス 03 3487 6010

E-Mail:  
info-j@schneeberger.com

### GERMANY

SCHNEEBERGER GmbH  
Gräfenau  
75339 Höfen/Enz

Phone +49 7081 782 0  
Fax +49 7081 782 124

E-Mail:  
info-d@schneeberger.com

### CHINA

SCHNEEBERGER (Shanghai) Co.,  
Ltd.  
Rm 606, Shang Gao International  
Building  
No. 137 XianXia Road  
200051 Shanghai

Phone +86 21 6209 0037 / 27  
Fax +86 21 6209 0102

E-Mail:  
info-cn@schneeberger.com

### CHINA

施耐博格(上海)传动技术有限公司  
上海市长宁区  
仙霞路137号盛高国际大厦606室, 上海 200051

电话 +86 21 6209 0027  
传真 +86 21 6209 0102

邮箱:  
info-cn@schneeberger.com

### ITALY

SCHNEEBERGER S.r.l.  
Via Soldani 10  
21021 Angera (VA)

Phone +39 0331 93 2010  
Fax +39 0331 93 1655

E-Mail:  
info-i@schneeberger.com

### KOREA

SCHNEEBERGER Korea LTD  
POSCO Center Bldg  
West Tower 11th FL  
892 Daech 4-Dong  
Kangnam-gu  
135-777 Seoul

Phone +82 2 559 073 5  
Fax +82 2 442 297 1

E-Mail:  
info-kr@schneeberger.com

### KOREA

슈니베르코리아 유한회사  
서울특별시 강남구 대치4동  
892 포스코센터빌딩 서관 11층  
1134호

전화 +82 2 559 073 5  
팩스 +82 2 442 297 1

이메일:  
info-kr@schneeberger.com

### USA

SCHNEEBERGER Inc.  
11 DeAngelo Drive  
Bedford, MA 01730

Phone +1 781 271 0140  
Fax +1 781 275 4749

E-Mail:  
info-usa@schneeberger.com

### SINGAPORE

SCHNEEBERGER LINEAR  
TECHNOLOGY PTE. Ltd.  
160 Paya Lebar Road, #05-04  
Orion Industrial Building  
409022 Singapore

Phone +65 6841 2385  
Fax +65 6841 3408

E-Mail:  
info-sg@schneeberger.com

### INDIA

SCHNEEBERGER India Private Limited  
Dhanur, 2nd Floor 15 Sir P M  
Road, Fort  
400 001 Mumbai

Phone +91 22 2263 2372  
Fax +91 22 2263 2371

E-Mail:  
info-in@schneeberger.com

## SCHNEEBERGER MINERAL CASTING

### CZECH REPUBLIC

SCHNEEBERGER  
Mineralgusstechnik s.r.o.  
Prumyslový park 32/20  
350 02 Cheb – Dolní Dvory

Phone +420 354 400 941  
Fax +420 354 400 940

E-Mail:  
info-mineralguss@schneeberger.com

### CHINA

SCHNEEBERGER Changzhou  
Precision Systems Co. Ltd.  
137 Hanjiang Road  
Changzhou New district  
213000 Changzhou, Jiangsu

Phone +86 519 8988 3938  
Fax +86 519 8988 5115

E-Mail:  
info-mineralcasting@schneeberger.com

### CHINA

施耐博格(常州)测试系统有限公司  
汉江路137, 常州新区, 常州213022

电话 +86 519 8988 3938  
传真 +86 519 8988 5115

邮箱:  
info-mineralcasting@schneeberger.com

## SCHNEEBERGER SALES DEPARTMENTS

### AUSTRIA

Mobile +43 676 935 1035

E-Mail:  
info-a@schneeberger.com

### ISRAEL

Mobile +972 5 0551 7920

E-Mail:  
info-il@schneeberger.com

### BENELUX

Mobile +31 6 5326 3929

E-Mail:  
info-nl@schneeberger.com

### POLAND, SLOVAKIA, CZECH REPUBLIC

Mobile +420 6 0278 4077

E-Mail:  
info-cz@schneeberger.com

### DENMARK, SWEDEN

Mobile +31 6 5326 3929

E-Mail:  
info-nl@schneeberger.com

### RUSSIA, BELARUS, UKRAINE

Mobile +7 985 960 85 53  
Mobile +38 050 407 6789  
Mobile +37 529 860 0410

E-Mail:  
info-ru@schneeberger.com

### FRANCE

Mobile +33 6 0941 6269

E-Mail:  
info-f@schneeberger.com

### SPAIN, PORTUGAL

Mobile +34 629 918 302

E-Mail:  
info-es@schneeberger.com

### GREAT BRITAIN

Mobile +44 77 8814 5645

E-Mail:  
info-uk@schneeberger.com

